

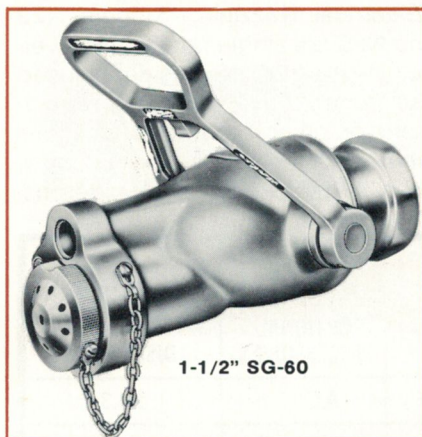
ROCKWOOD WATERFOG AND FOAM NOZZLES



Rockwood Firefighting

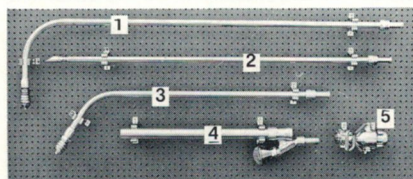
Rockwood SG type nozzles are all-purpose fire fighters for refineries, marine, municipalities and industrial use.

Proper selection of nozzle and accessories can provide the fire fighter with up to (6) six agent/discharge capabilities to fight nearly any type of fire he may face.



1-1/2" SG-60

These nozzles have a three position valve handle for the following functions: 1. Shut off; 2. High velocity WaterFOG 3. Straight stream. By attaching various accessories, SG nozzles can provide, in addition, low velocity WaterFOG, straight stream foam, FogFOAM, and low velocity WaterFOG through bayonet piercing applicator.



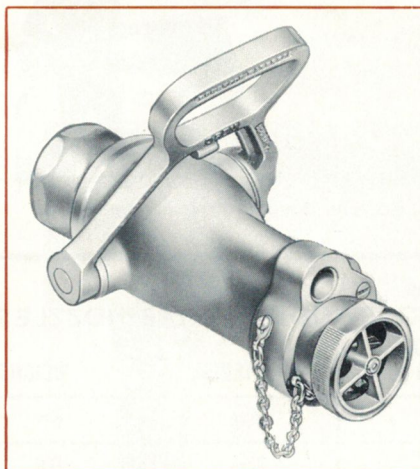
SG Nozzle with complete family of accessories

- 1 6' Low velocity applicator
- 2 Bayonet piercing applicator
- 3 4' Low velocity applicator
- 4 FF Extension
- 5 SG60 Nozzle

Depending on accessories, the following discharges can be obtained from SG type nozzles. Refer to Table 1-C for combination of nozzles and accessories for various discharge capabilities.

STRAIGHT STREAM WATER

Selector handle in full back position provides a straight stream of water useful for most fire jobs.



1-1/2" SG-71 USCG Approved

HIGH VELOCITY WATERFOG

Selector handle in mid-position provides a solid cone of water particles. As these particles enter the fire area, they are readily converted to steam. This conversion absorbs heat, reducing the rate of burning and lowering the temperature.



SG Nozzle high velocity WaterFOG

The Rockwood solid WaterFOG cone prevents flammable vapors from flashing back to the nozzle and provides a protective wall, particularly when leeward approach is necessary.

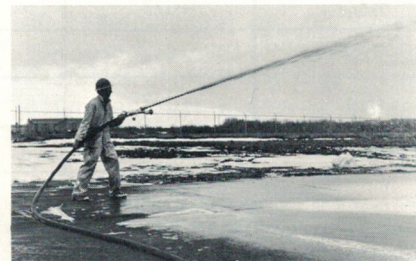
SG selection handle advances from "off" through "WaterFOG" then to "straight stream." This safety feature obviates the need to go through straight stream to WaterFOG; of particular importance if the fire is flammable liquids.

LOW VELOCITY WATERFOG

Low velocity WaterFOG is obtained by attaching a low velocity applicator at the WaterFOG opening by a bayonet connection. Low velocity WaterFOG produces a fine umbrella-shaped mist which is excellent for most fires. Gentle application is possible with the applicator even when it is held close to the surface when fighting flammable liquid fires. This pattern is also useful as protection for personnel in close approach to fire.



SG Nozzle with low velocity WaterFOG accessory



SG Nozzle with FF extension accessory



SG with FF extension accessory

FOAM AND FOGFOAM

Attachment of the FF extension converts the water nozzle to a foam nozzle. The FF extension is attached by bayonet connection at the WaterFOG opening. Handle position in straight stream will yield straight

stream foam, and in WaterFOG, an excellent dispersed FogFOAM.

PIERCING APPLICATOR

When attached by bayonet connection at the WaterFOG opening, the piercing applicator provides a low velocity WaterFOG for fighting fires in ducts, walls, baled materials, shipping containers, etc. The hardened steel point allows the applicator to be driven through the wall or barrier to reach the fire.



SG with Bayonet Piercing accessory



1-1/2 N22 electrical nozzle

Electrical Nozzles - Models N22 and N23 are single pattern high velocity WaterFOG nozzles designed to use around live electrical equipment or other hazardous locations where accidental discharge of a solid stream would be dangerous.

**TABLE 1-C
ROCKWOOD SG TYPE NOZZLES**

MODEL	SIZE	FLOW @ 100 psi	MATERIAL	WEIGHT	OPTIONAL ACCESSORIES	DISCHARGES
SG 47 ^{***}	3/4"	20	Brze.	6#	A,C	1,2,3
SG 47 ^{**}	1"	20	Brze.	6#	A,C	1,2,3
SG 47 ^{**}	1-1/2"	110	Brze.	9#	A,C	1,2,3
SG 47 ^{**}	2-1/2"	280	Brze.	15#	A,C	1,2,3
SG 48 ^{**}	1-1/2"	110	Alum.	6#	A,C	1,2,3
SG 48 ^{**}	2-1/2"	280	Alum.	8#	A,C	1,2,3
SG 60 ^{**}	1"	20	Alum.	5#	A,B,C	1,2,3,4,5
SG 60 ^{**}	1-1/2"	50	Alum.	6#	A,B,C	1,2,3,4,5
SG 60 ^{**}	2-1/2"	200	Alum.	8#	A,B,C	1,2,3,4,5
SG 62 ^{**}	1-1/2"	50	StarRock	6#	A,B,C	1,2,3,4,5
SG 62 ^{**}	2-1/2"	200	StarRock	8#	A,B,C	1,2,3,4,5
SG 71 ^{**}	1-1/2"	110	Brze.	10#	A,B,C	1,2,3
SG 70 ^{**}	2-1/2"	280	Brze.	16#	A,B,C	1,2,3
N22 ^{**}	1-1/2"	48	Alum.	1#	-----	2
N22	2-1/2"	126	Alum.	2#	-----	2
N23 ^{**}	1-1/2"	72	Alum.	3#	-----	2
N23 ^{**}	2-1/2"	200	Alum.	4#	-----	2

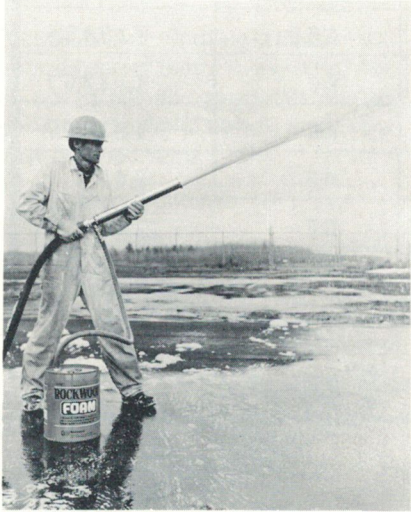
ACCESSORIES:
 A. Low Velocity Applicator
 B. FF Extension
 C. Bayonet Piercing Applicator

DISCHARGES:
 1. Straight Stream Water
 2. High Velocity WaterFOG
 3. Low Velocity WaterFOG
 4. Straight Stream Foam
 5. FogFOAM -

Straight Stream Discharge
 * USCG Approved
 ** UL Listed
 *** U.S. Navy Type

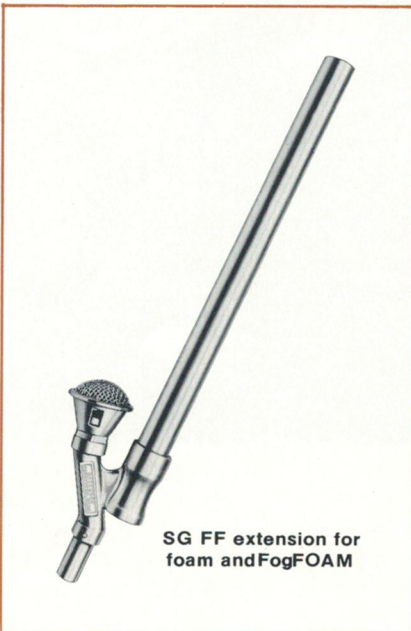
ROCKWOOD FOAM HANDLINE NOZZLES

Foam nozzles are used to combat flammable liquid fires. Rockwood foam concentrate can be proportioned into the line at 1% to 6%. Rockwood foam nozzles are designed to be used with regular, double strength, all purpose, Jet-X, and aqueous film forming foams.



F-503 foam nozzle

Models F503 and F603 foam nozzles provide straight stream foam. F503 comes complete with pickup tube and metering valve. With model F603 foam must be introduced in-line via an eductor or fixed proportioning system. Model F501F is similar to F503 but has a flexible play pipe. F501F is complete with pickup hose. Metering valve is not required.



SG FF extension for foam and FogFOAM

Handline Models R-700, 1060A and 1100A represent the ultimate in all purpose firefighting tools.



1060A water stream position

R-700 is an SG type nozzle which can deliver straight stream water, high and low velocity WaterFOG, fan pattern water spray, foam and FogFOAM.



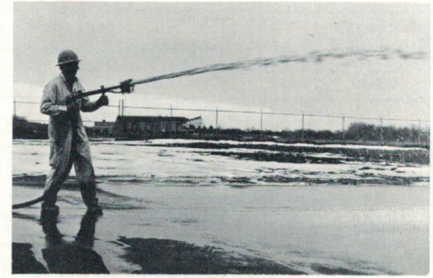
1060 A dispersed foam pattern

Models 1060A and 1100A were designed for U.S. military crash trucks to provide the most versatile firefighting punch into a single handheld unit. Built into the unit is a capability for (1) straight stream



foam; (2) infinitely variable foam dispersed pattern; (3) long-range straight stream water; (4) WaterFOG

and (5) flat water spray. Attachments provide (6) low velocity WaterFOG through a standard applicator and (7) bayonet piercing tool.



1060 A straight stream foam setting

1060A and 1100A deliver 60 and 100 gpm at 100 psi respectively. These units are a must for your crash truck, refinery truck, foam equipped pumper or wherever a seven in one fire tool is necessary.



1060 A low velocity WaterFOG setting

The FFF foam nozzle is the most popular foam nozzle ever made. Designed specially for the U. S. Navy, the FFF has seen more action fighting flammable liquid fires than any other. This unit provides high velocity WaterFOG, straight stream foam and FogFOAM



1-1/2" FFF nozzle

APPLICATOR MOUNTING CLIPS

To secure your nozzle and accessory equipment, we recommend Rockwood utility and application clips. Use of mounting clips secures equipment yet makes it instantly available for fire use.

NOZZLE FINISH

Rockwood nozzles come in a variety of finishes including polished aluminum, brushed and polished bronze and chrome-plated bronze.

TABLE 2-C ROCKWOOD HANDLINE FOAM NOZZLES

MODEL	SIZE	FLOW @ 100 psi	MATERIAL	WEIGHT	OPTIONAL ACCESSORIES	DISCHARGES
F501F	1½"	60	Brze.	11#		4
F503	1½"	60	"	8#		4
F503	2½"	120	"	9#		4
F603	1½"	60	"	7#		4
F603	2½"	120	"	8#		4
R700	1"	*	Al.	7#	A,B,C	1,2,3,4,5,6
1060A	1" - 1¼" - 1½"	60	"	9#	A,C	1,2,3,4,6,7
1100A	1¼" - 1½"	100	"	11#	A,C	1,2,3,4,6,7
FFF	1½"	50	"	12#	D,E	2,4,5
FFF	2½"	200	"	20#	D,E	2,4,5

ACCESSORIES:

- A - Low velocity applicator
- B - FF extension
- C - Piercing Applicator
- D - Foam shaper
- E - FogFOAM screen

DISCHARGES:

- 1 Straight stream water
 - 2 High velocity WaterFOG
 - 3 Low velocity WaterFOG
 - 4 Straight stream foam
 - 5 FogFOAM
 - 6 Fan spray water
 - 7 Infinitely variable foam pattern
- *15,20,29,32 gpm



Rockwood Systems Corporation

*The World's Leading Manufacturer of
Foam Fire Protection Systems*

80 Second Street • South Portland, Maine 04106

C4

For Additional Details Call: (207) 799-3341

PRINTED IN U.S.A.

FN2-1-76-3M