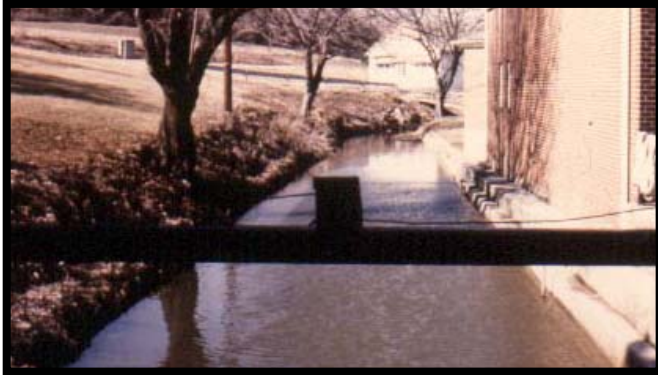


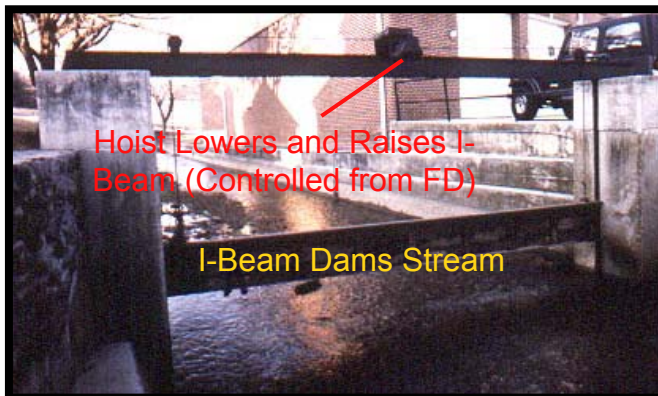
**RFI411.org** — Subject: **Rural Water Supply-Stream Damming**

**Lineboro VFD (MD) Rural Water Supply**  
Stream Damming Arrangement Allows Drafting Source When Needed



The Lineboro VFD(Carroll County, MD) is a rural department that has to rely on static water sources and tanker operations. One of its primary water sources is a shallow stream that flows next to the fire station.

To make this stream accessible for drafting, the department designed an electric damming arrangement that can be used to dam the stream when a water source is needed.



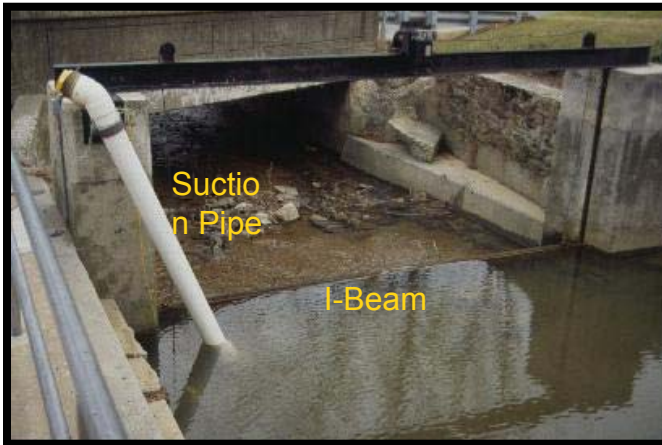
The arrangement consists of an electric hoist controlled from within the fire station and an I-beam that actually dams the stream



When the I-beam is in place, the stream is deep enough to allow drafting with a pumper.

To simplify drafting set-up, a 6" PVC suction pipe with lo-level strainer is mounted at the dam.

# A Unique Rural Water Supply Innovation



The dam and suction pipe as viewed from the fire station.

The PVC suction pipe is mounted to the concrete support with a metal swivel bracket that allows the pipe to be raised from the water to clean the lo-level strainer.



The mounting bracket and a rope allows the suction pipe to be raised so strainer can be cleaned if needed.

Notice the lo-level strainer.



The PVC suction pipe in the raised position.