

www.GotBigWater.com



Big Water
Rigs



Bastrop Fire Department – Tender 213
2,000-gallon Tender
Bastrop, Texas

Facts and Figures...

- Tender 213 is one of four identical 2008 Ferrara tenders operated by the Bastrop Fire Department in Bastrop, Texas.
- The rigs are built on a Freightliner chassis and carry 2,000 gallons of water.
- The tenders are equipped with a Hale 1,250 gpm mid-ship mount pump, a 10-inch rear dump, a 4-inch direct fill and carry a 3,000-gallon dump tank.
- The tenders are run out of the four Bastrop fire stations.
- The Bastrop Fire Department is part of Bastrop County Emergency Services District #2 and helps to protect the rural and suburban areas of Bastrop County.

Bastrop Tenders



Bastrop FD operates four of these 2008 Ferrara tenders (T213, T223, T233, T243). These short-wheel-based, 2,000-gallon tenders are well-equipped to support a rural water supply operation either as a nurse tender or a shuttle tender.

Bastrop Tenders



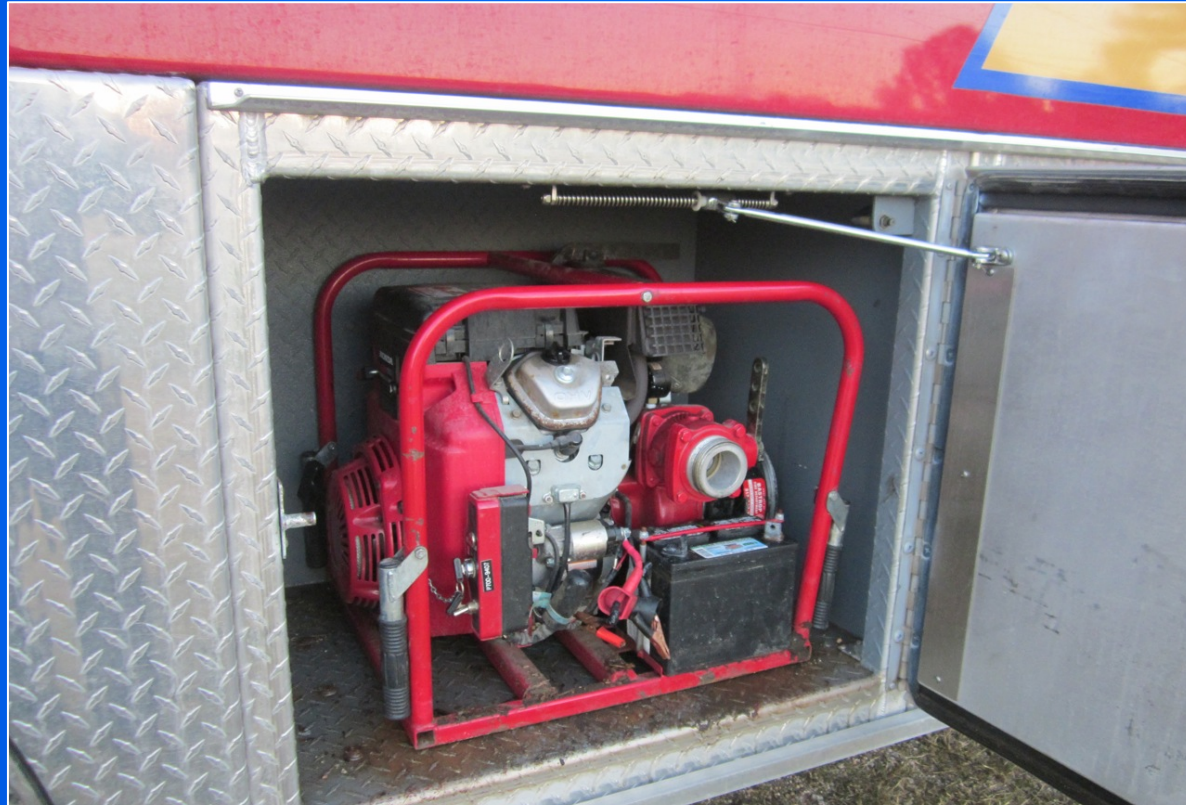
The tenders have a single, 10-inch rear dump that is controlled from the cab. An elbow chute is used to direct the water when side dumping is needed.

Bastrop Tenders



The tenders have a low profile and center of gravity which improves their handling while traveling the back country roads of Bastrop County. Each tender also is equipped with a 1,250 gpm mid-ship pump.

Bastrop Tenders



In addition to the tenders' midship pumps, each tender also carries a C.E.T 500 gpm gasoline powered portable pump. The portable pumps are outfitted to draft using 6-inch suction hose and to discharge through 5-inch LDH.

Bastrop Tenders



Each tender carries a 3,000-gallon dump tank which really improves the on-site storage capacity at a dump site operation. At this December 2013 drill, the first two tenders dropped their 3,000 gallon dump tanks.

Bastrop Tenders



The rear "elbow" chute in action at the 2013 water supply drill. The valve is remotely operated by the driver in the cab – all of which saves time.

Bastrop Tenders



The tenders are outfitted with a rear, 4-inch direct fill line that is used to load the tenders in very little time. At this fill site operation, the Bastrop tenders were loaded at over 1,000 gpm.

Bastrop Tenders



5-inch LDH is used to load the tenders. The goal is to run the fill site much like a NASCAR pit stop – and the use of LDH makes that happen.



www.GotBigWater.com

*This program was developed by
GBW Associates, LLC
Copyright © 2014*

*No part may be used or copied
without expressed written consent.*

*For more information contact us at
thebigcamel@gotbigwater.com*